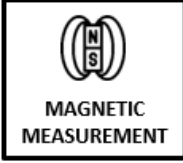
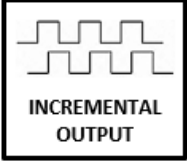
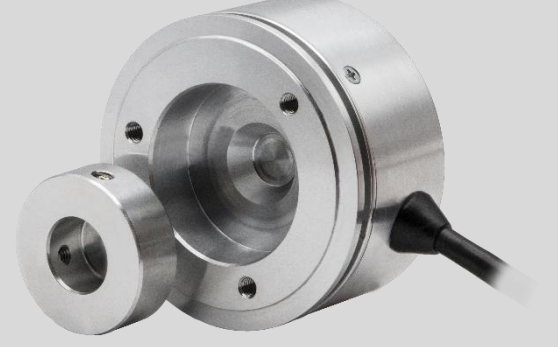


NON-CONTACT INCREMENTAL ROTARY ENCODER

ART B 58 Series

“Magnetic Non-Contact Measurement,
58 mm Body Diameter”



- Non-contact measurement with magnetic principle
- Incremental output
- 58 mm body diameter
- Resolution options between 1 pulse and 1024 pulses
- Operating speed up to 20.000 RPM
- IP65 protection class
- High sensitivity
- Robust structure, long service life

ART B 58 series rotary encoders measure with magnetic principle and work contactless.

They consist of 2 parts, the encoder body and rotor. They have long operating life as they make non-contact measurement. They can also operate at high speeds up to 20,000 RPM. They work incrementally and offer resolution up to 1024 pulses.

MECHANICAL DATA

Dimensions	Encoder: Ø58
	Rotor: Ø30
Material	Encoder: Aluminum
	Rotor: Aluminum
Weight	Encoder: ~180g
	Rotor: ~10g



ENVIRONMENTAL DATA

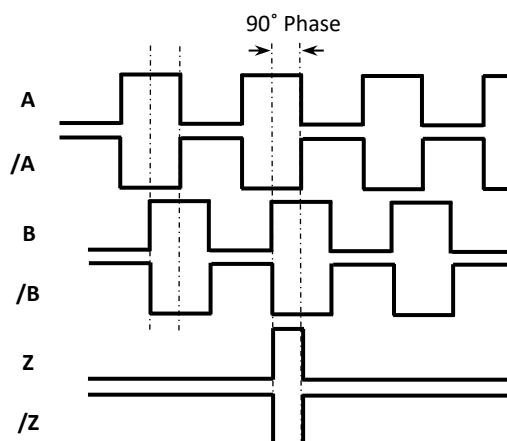
Protection Class	IP65
Operating Temp.	-25°C...+85°C
Storage Temp.	-40°C...+100°C

ELECTRICAL DATA

Measuring Type	Magnetic, non-contact						
Resolution	All resolution values between 1 and 1024 pulses						
Operating Speed	20.000 RPM max.						
Response Frequency	300 KHz						
Current Consumption	50 mA nominal						
Supply and Output Type		PP	TTL	HTL	HPL	OCL	OCP
	Supply	10...30 VDC	5 VDC	10...30 VDC	5...30 VDC	The supply signal should not be lower than the output signal	
	Output	10...30 VDC PP	5 VDC TTL	5 VDC TTL	5...30 VDC PP	NPN Open Collector	PNP Open Collector
Output Signals	A, /A, B, /B, Z, /Z						
Output Current	100 mA max. (per channel)						
Electrical Connection	5 x 0,14mm ² shielded cable (outer diameter: 5 ±0,2 mm) (When output signal is selected as 2 or 3) 8 x 0,14mm ² shielded cable (outer diameter: 6,5 ±0,2 mm) (When output signal is selected as 4 or 6)						

ELECTRICAL CONNECTION

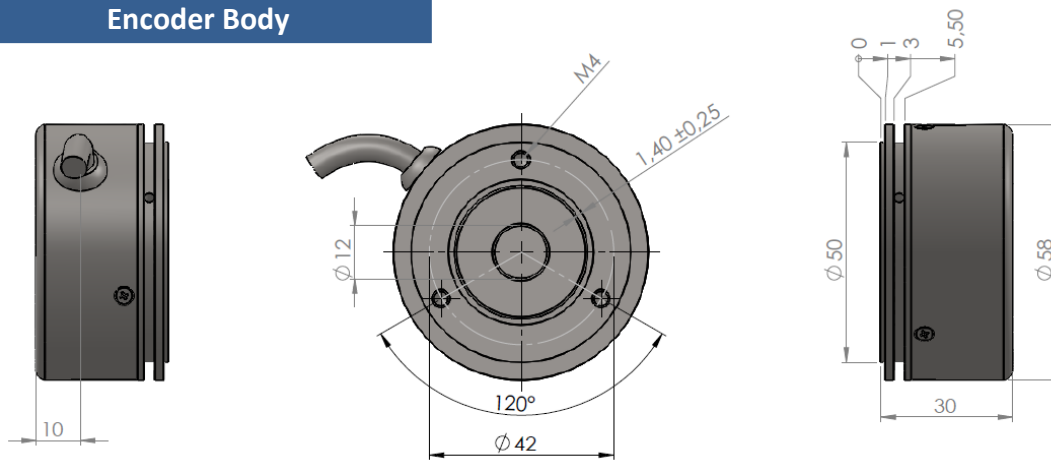
	
SIGNAL	CABLE COLOR
A	YELLOW
/B	WHITE
+V	RED
0 V	BLACK
/A	BLUE
B	GREEN
/Z	GREY
Z	PINK



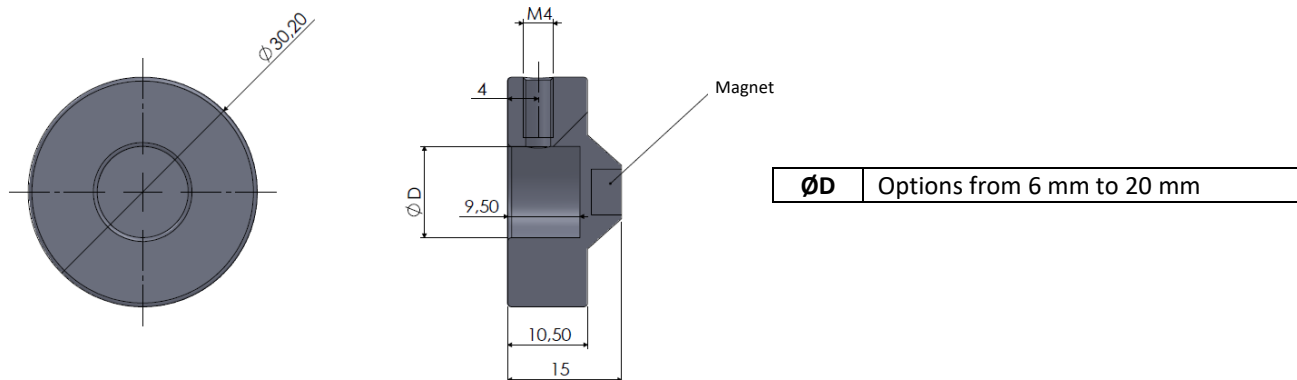
The table above shows the cable colors of the sensor output signals. If the control circuit is suitable in the Line Driver sensors of the not output signals (/A, /B, /Z) have to be added to the system. If it is not suitable /A, /B, /Z signal cables must be fixed as insulated separately. Don't forget that these edges have electricity too.

MECHANICAL DIMENSIONS (mm)

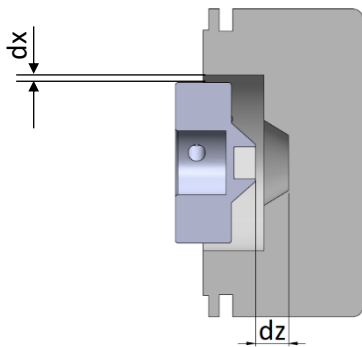
Encoder Body



Rotor



MAGNET - ENCODER SENSING DISTANCE AND POSITION TOLERANCE



Sensing Distance= $dz = 1,3 - 2 \text{ mm}$

Alignment = $dx = 1,40 \pm 0,25 \text{ mm}$

ORDER CODE

ORDER CODE																	
ART	Type	XXX	XXXX	XXX	X	XX	X	X									
	B : Semi hollow shaft																
Resolution																	
All resolution values between 1 and 1024 pulses are available																	
Output Signals																	
2 (A,B) 3 (A,B,Z) 4 (A,/A,B,/B) 6 (A,/A,B,/B,Z,/Z)																	
Cable Direction																	
Y : From side																	
Model																	
		Body Diameter		Supply and Output			Cable Length		Hollow Diameter								
		058 : 58 mm		PP : 10...30 VDC Supply : 10...30VDC Output TTL : 5 VDC Supply : 5 VDC TTL RS422 Line Driver Out. HTL : 10...30 VDC Supply : 5 VDC TTL RS422 Line Driver Out. HPL : 5...30 VDC Supply : 5...30 VDC Push-Pull Output OCL : NPN Open Collector OCP : PNP Open Collector			3M : 3M (Standard) 5M : 5M 8M : 8M 10M : 10M *Optional others		Different hollow diameters between 6mm and 20 mm								

ART B 58