

ROTARY POTENTIOMETER

“23,2 mm Small Body Size, 6 or 6.35mm Shaft”

ERP S 23



GENERAL FEATURES

- 320° electrical angle (or other angles on request)
- 320°±1 mechanical angle (with or without mechanical stop)
- 23,2 mm small body diameter
- 6 or 6.35mm shaft diameter
- High linearity up to ±1%
- Long life up to 10 million movements
- IP65 protection class

APPLICATIONS

- Automotive engineering, drive and control engineering
- Controlgears
- Machinery construction
- Shipbuilding
- Medical technology

TECHNICAL FEATURES

Electrical Data

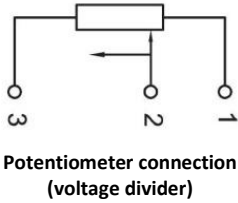
Electrical Angle	320° or other angles on request
Resistance Values	5K, 10K
Resistance Tolerance	±%20
Resistance Element	Conductive Plastic
Supply Voltage	42V max.
Independent Linearity	±%1
Repeatability	0.1° max.
Resolution	Infinite
Recommended Wiper Current	1 µA max.
Power rating	0,5W @40° max.
Insulating Resistance	>1Gohm @ 500VDC
Electrical connection	0,5m cable

Mechanical Data

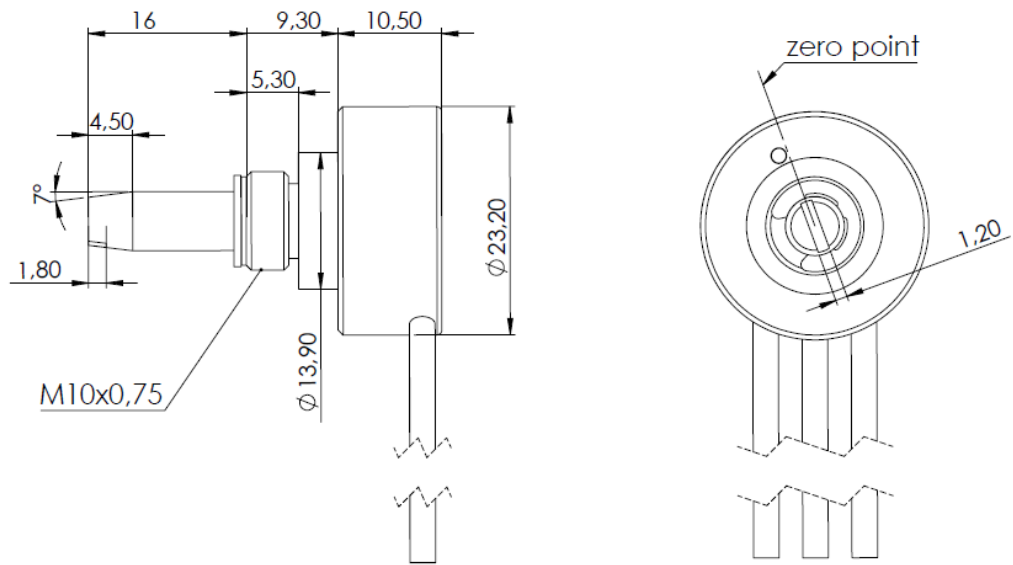
Mechanical Angle	320°±1, with or without mechanical stop
Life	10 million movements
Body Diameter	23,2 mm
Shaft Diameter	6mm or 6.35mm (optional others)
Torque	0.7 Ncm
End-Stop Strength	0.7 Ncm
Body Material	Aluminum
Shaft Material	316L Stainless Steel
Operating Temperature	-25°C ... +85°C
Storage Temperature	-40°C ... +105°C
Protection Class	IP65
Weight	~20gr

ELECTRICAL CONNECTIONS

SIGNAL	CABLE
+V	BROWN
Output Signal	YELLOW
-V	BLACK



MECHANICAL DIMENSIONS (mm)



ORDER CODE

Model				Electrical Angle				Shaft Diameter			
320 : 320°				6: 6 mm				6.35 : 6.35mm			
*Other angles on request				*Optional others							
ERP S	-	XX	-	XXX	-	XX	-	XXX	-	X	
Body Diameter				Resistance Value				Mechanical Stop Feature			
23 : 23,2 mm				5K : 5K				No code: Without mechanical stop			
				10K : 10K				S: With mechanical stop			