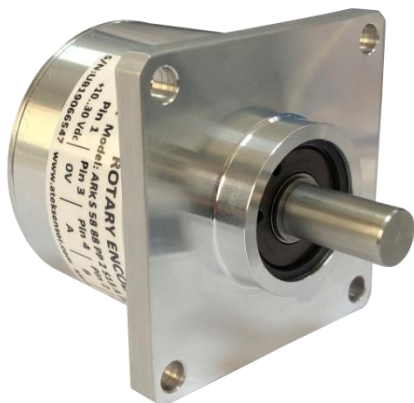


# IP67 INCREMENTAL ROTARY ENCODER

“Magnetic Non-Contact Measurement, 58 mm Body Diameter, With Shaft”

**ARK S 58**



## GENERAL FEATURES

- Non-contact measurement with magnetic principle
- Incremental output
- 58 mm body diameter
- 6 mm, 8 mm or 10 mm shaft options
- Resolution options between 1 pulse and 1024 pulses
- 3000 RPM operating speed
- Heavy environmental conditions and vibration resistant, IP67 protection class
- High sensitivity
- Robust structure, long service life

ARK S 58 series rotary encoders measure with magnetic principle and work contactless. They give incremental digital pulse signal output. They have different resolution values between 1 pulse and 1024 pulses. With their high IP67 protection class, they can work in harsh environmental conditions. Optionally, different cable length, socket model and shaft diameter can be requested.

## APPLICATION FIELDS

- Wind Applications / Power Plants
- Marine or Utility Vehicle Applications
- Press or Wood and Stone Processing Machinery
- Construction Machinery
- Cranes
- Offshore Applications
- Servo-motors
- Packaging and production lines
- Automation and robots
- Commercial Solar Plants

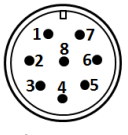




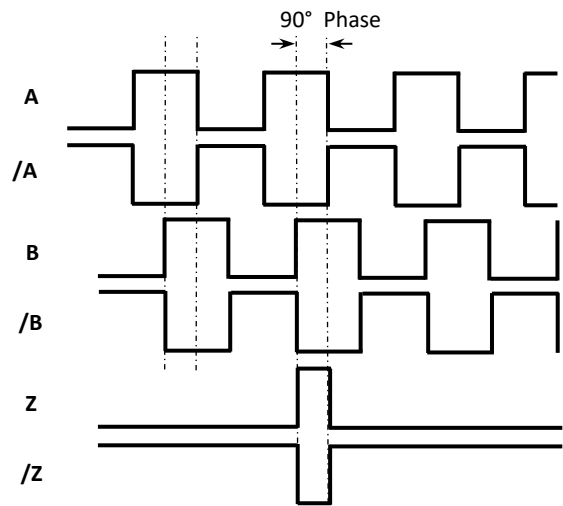
## TECHNICAL SPECIFICATIONS

<b>Max. Operating Speed</b>	3000 RPM
<b>Measuring Type</b>	Magnetic, non-contact
<b>*Resolution</b>	All resolution values between 1 and 1024 pulses
<b>*Supply Voltage</b>	TTL: 5 VDC PP: 10...30VDC
<b>Current Consumption</b>	50 mA nominal
<b>*Output Type</b>	Push pull, TTL Line Driver, Open Collector
<b>*Output Signals</b>	A, /A, B, /B, Z, /Z
<b>Operating Temperature</b>	-25...+85 °C
<b>Storage Temperature</b>	-40...+85 °C
<b>*Electrical Connection</b>	M16 socket 5 x 0,14mm <sup>2</sup> shielded cable (outer diameter: 5 ±0,2 mm) (When output signal is selected as 2 or 3) 8 x 0,14mm <sup>2</sup> shielded cable (outer diameter: 6,5 ±0,2 mm) (When output signal is selected as 4 or 6)
<b>*Shaft Diameters</b>	6 mm, 8 mm or 10 mm
<b>Protection Class</b>	IP67
<b>Weight</b>	~330 gr
<b>Material</b>	Body: Aluminium Shaft: Stainless Steel

**Note:** The specifications indicated by (\*) vary according to the model selected. The detailed code table for product selection is shown on page 3.

## ELECTRICAL CONNECTION

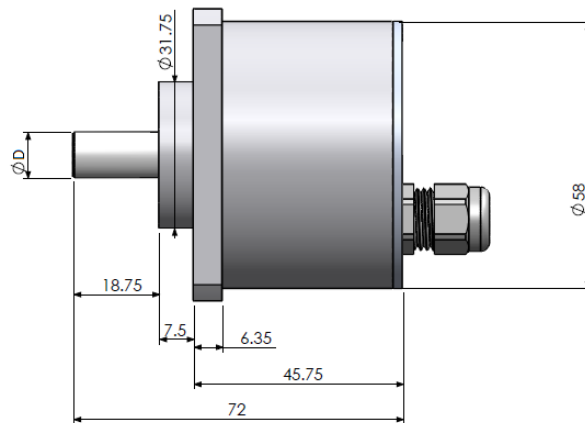
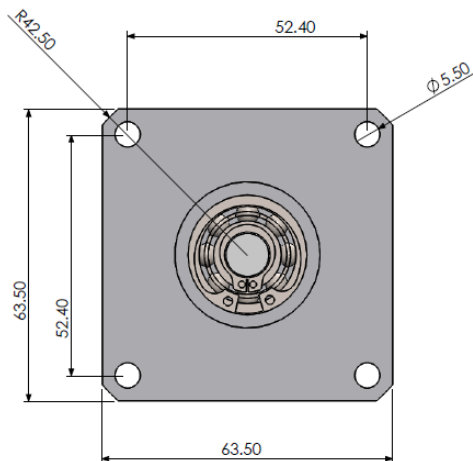
 <b>M16 / 8 PIN MALE SOCKET PIN NO</b>	 <b>SIGNAL</b>	 <b>CABLE COLOR</b>
1	A	YELLOW
2	/B	WHITE
3	+V	RED
4	0 V	BLACK
5	/A	BLUE
6	B	GREEN
7	/Z	GREY
8	Z	PINK



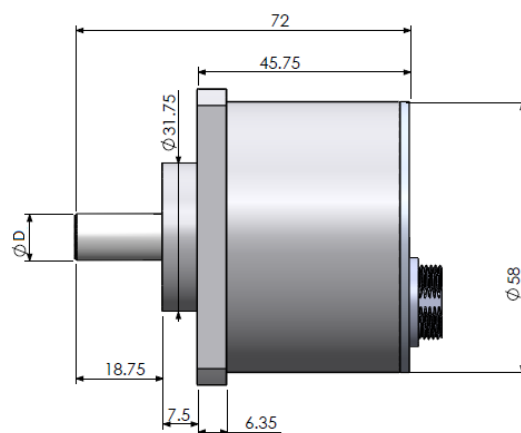
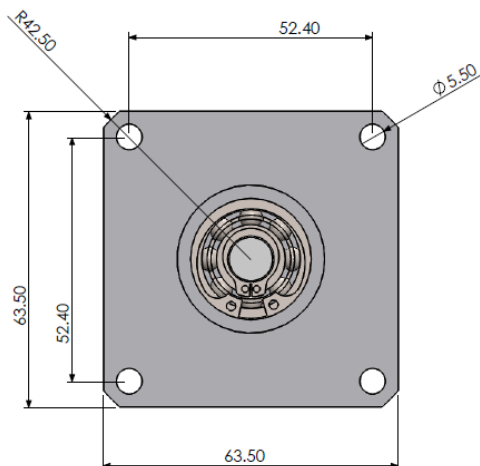
The table above shows the cable colors of the sensor output signals. If the control circuit is suitable in the Line Driver sensors of the not output signals (/A, /B, /Z) have to be added to the system. If it is not suitable /A, /B, /Z signal cables must be fixed as insulated separately. Don't forget that these edges have electricity too.

## MECHANICAL DIMENSIONS (mm)

### Cable From Backside

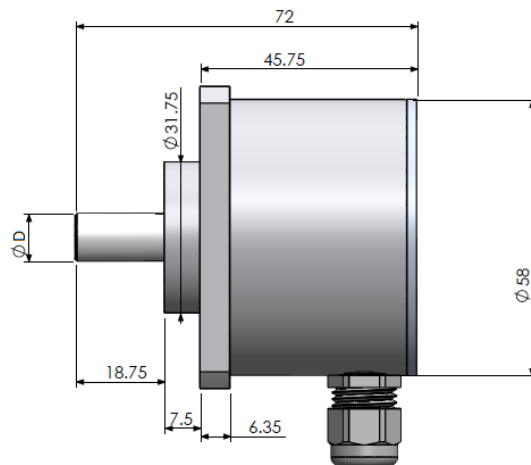
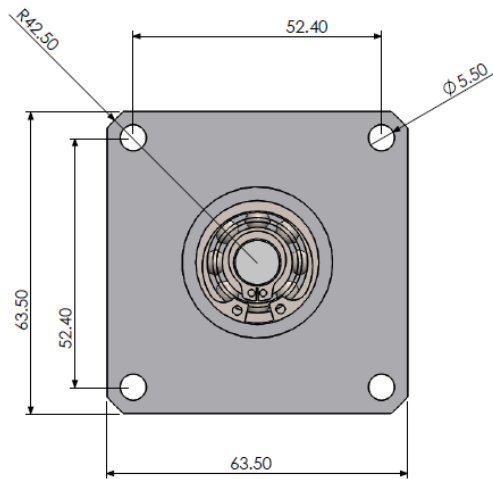


### Connector From Backside

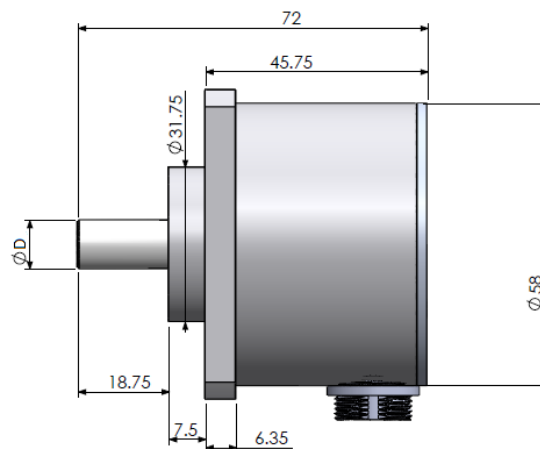
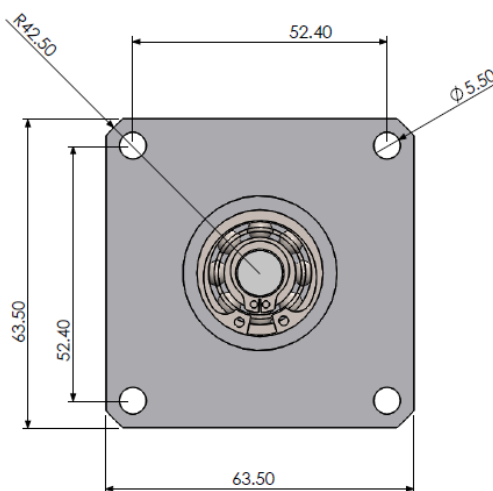


\*D= 6 mm, 8 mm or 10 mm are available.

## Cable From Side



## Connector From Side



\*D= 6 mm, 8 mm or 10 mm are available.

## PRODUCT CODE

PRODUCT CODE									
Model	Body Diameter			Supply and Output			Electrical Connection		Shaft Diameter
ARK	X	XXX	XXXX	XXX	X	XX	XX	XX	XX
	58 : 58 mm			PP : 10...30 VDC Supply : 10...30VDC Output TTL : 5 VDC Supply : 5 VDC TTL RS422 Line Driver Out. HTL : 10...30 VDC Supply : 5 VDC TTL RS422 Line Driver Out. HPL : 5...30 VDC Supply : 5...30 VDC Push-Pull Output OCL : NPN Open Collector OCP : PNP Open Collector			3M : 3 m cable 5M : 5 m cable 10M : 10 m cable S14 : M16 / 8 pin Male Socket		6 : 6 mm 8 : 8 mm 10 : 10 mm
	Shaft Type			Resolution			Output Signals		Cable or Connector Direction
	S : Shaft			All resolution values between 1 and 1024 pulses are available			2 (A,B) 3 (A,B,Z) 4 (A,/A,B,/B) 6 (A,/A,B,/B,Z,/Z)		A : From backside Y : From side

\* Please contact for other (customized) options.